

DERMATOLOGY



AESTHETIC MEDICINE

IPL Series  
**ETERNA GIOVINEZZA**  
**SILK LIGHT**

Eterna Giovinezza	
Source	Intense Pulsed Light
Handpieces	650 - 1200 nm for dark skin hair removal 625 - 1200 nm standard for hair removal 590 - 1200 nm for light skin hair removal and dark skin rejuvenation 570 - 1200 nm for skin rejuvenation 550 - 950 nm for vascular and pigmentations treatments 400 - 1200 nm for acne treatments
Spot size	48x13 mm <sup>2</sup> 25x13 mm <sup>2</sup>
Maximum fluence	30J/cm <sup>2</sup> 40J/cm <sup>2</sup>
Pulse duration	variable from 3 ms to 240 ms
Burst mode operation	up to 5 pulses, with variable pulse duration
Repetition rate	up to 1 pulse every 2 seconds
Dimensions	480 (W) x 380 (D) x 1200 (H) mm <sup>3</sup>
Weight	50 Kg
Electrical requirements	200-230V AC; 12A; 50/60 Hz

Silk Light						
Application	Active acne treatments	Pigmented and vascular lesions	Skin rejuvenation	Hair removal and skin rejuvenation	Hair removal (standard)	Hair removal for dark skins
Handpieces	400-1200 nm	550-950 nm	570-1200 nm	590-1200 nm	625-1200 nm	650-1200 nm
Pulse duration	3-240 ms					
Repetition rate	up to 1 pulse every 3 sec					
Spot size	48x13 mm <sup>2</sup> 25x13 mm <sup>2</sup>					
Max fluencies @ 48 x 13 mm <sup>2</sup> @ 25 x 13 mm <sup>2</sup>	30 J/cm <sup>2</sup> 40 J/cm <sup>2</sup>					
Electrical requirements	200-230 V AC; 50 / 60 Hz					
Power consumption	12 A					
Dimensions	450 (W) x 440 (D) x 250 (H) mm <sup>3</sup>					
Weight	23 Kg					

Quanta System's products are manufactured according to the International standards and have been cleared by the most important International notified bodies. The Company is UNI EN ISO 9001:2000 and UNI EN ISO 13485:2004 certified. Quanta System S.p.A. was founded in 1985 and belongs to the El.En Group (a public company listed on the Tech-Star segment of the Italian Stock Exchange) since January 2004. The company, divided into three business units (scientific, industrial and medical) is specialized in lasers and opto-electronic devices.

UNI EN ISO 13485:2004  
UNI EN ISO 9001:2000

Specifications are subject to change without notice.

Distributor



DERMATOLOGY



AESTHETIC MEDICINE

IPL Series  
**ETERNA GIOVINEZZA**  
**SILK LIGHT**

**The latest generation of Pulse Light Technology**

The Eterna Giovinezza and the Silk Light series are medical and aesthetic Pulse Light systems. They have been developed by Quanta System in co-operation with world-wide researchers having many years of experience in skin-photonics applications.

Both series are very flexible and powerful. Their efficacy is clinically proven and provides new treatment opportunities to increase the professional success and to grant the desired clinical results.

**Quanta IPLs are based on a proprietary technology producing the pulse light at the highest fluences now available on the market.**



Eterna Giovinezza



Silk Light

**APPLICATIONS:**

- Hair removal
- Skin rejuvenation
- Pigmented lesions
- Vascular lesions
- Active acne treatments



# QUANTA SYSTEM

First in Lasers

DERMATOLOGY



AESTHETIC MEDICINE

IPL Series

## ETERNA GIOVINEZZA SILK LIGHT

The latest generation  
of Pulse Light Technology

### Eterna Giovinezza

**Standard Version:** IPL tower, equipped with one handpiece and fixed or interchangeable waveguides, touch screen panel, suggested pre-set or variable treatment protocols.

**Plus Version:** IPL tower, equipped with two handpieces and fixed or interchangeable waveguides, touch screen panel. Fast handpiece connectors, suggested pre-set or variable treatment protocols.



All models are equipped with magic connectors for fast handpiece replacement.

### Silk Light

**Table Top IPL:** a portable model equipped with one handpiece, fixed or interchangeable waveguides, touch screen panel, suggested pre-set or variable treatment protocols.



### Filters available for all versions and models:

Wavelengths	Applications
650-1200 nm	Hair removal dark skins (F+I)
625-1200 nm	Hair removal standard (F)
590-1200 nm	Hair removal and skin rejuvenation skin type III-V (F+I)
570-1200 nm	Skin rejuvenation skin type I - III (F+I)
550-950 nm	Vascular and pigmented lesions (F+I)
400-1200 nm	Active acne treatments (F+I)

F = Fixed handpiece  
I = Interchangeable waveguides

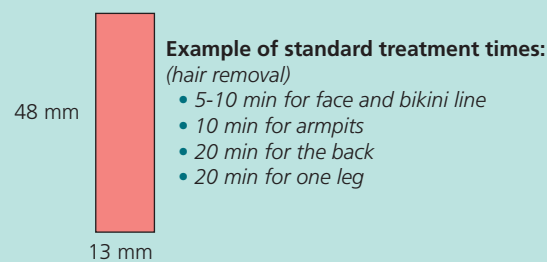
### Maximum fluence available with interchangeable waveguides

Wavelengths	Waveguides	Maximum fluencies
650-1200 nm	48x13 mm <sup>2</sup>	25 J/cm <sup>2</sup>
650-1200 nm	25x13 mm <sup>2</sup>	25 J/cm <sup>2</sup>
625-1200 nm	48x13 mm <sup>2</sup>	25 J/cm <sup>2</sup>
625-1200 nm	25x13 mm <sup>2</sup>	25 J/cm <sup>2</sup>
590-1200 nm	48x13 mm <sup>2</sup>	25 J/cm <sup>2</sup>
590-1200 nm	25x13 mm <sup>2</sup>	25 J/cm <sup>2</sup>
570-1200 nm	48x13 mm <sup>2</sup>	25 J/cm <sup>2</sup>
570-1200 nm	25x13 mm <sup>2</sup>	25 J/cm <sup>2</sup>
550-950 nm	48x13 mm <sup>2</sup>	25 J/cm <sup>2</sup>
550-950 nm	25x13 mm <sup>2</sup>	25 J/cm <sup>2</sup>
400-1200 nm	48x13 mm <sup>2</sup>	25 J/cm <sup>2</sup>
400-1200 nm	25x13 mm <sup>2</sup>	25 J/cm <sup>2</sup>

### How Eterna Giovinezza and Silk Light work

They are intense pulse light systems able to provide a broad range of wavelengths interacting with the skin. Thanks to special interchangeable waveguides or handpieces, it is possible to treat a wide range of skin problems, while targeting specific chromophores (such as blood, melanin and water) with the right wavelengths, fluence and pulse duration.

The Eterna Giovinezza and Silk Light systems are clinically proven and very effective. The applications result extremely fast, thanks to the high repetition rate and the big spot sizes available (13x48 mm<sup>2</sup> and 13x25 mm<sup>2</sup>).



### Interchangeable waveguides



25x13 mm<sup>2</sup>



48x13 mm<sup>2</sup>

### Hair removal



Before



After 4 treatments

Quanta's Pulse Light technology uses a special pulse emission optimized for best results, comfort and safety of patients. It has been developed to prevent the overheating of the pigmented epidermis, by respecting the specific TRT (Thermal Relaxation Time) of each skin target.

For this reason, Quanta's IPLs work either in single pulse or in burst mode (a pulsed emission made of multiple sub-pulses with variable pulse delay), with fixed or interchangeable waveguides having different cut-off wavelengths in order to increase the skin target selectivity, thus avoiding thermal damage to the surrounding areas.

All the relevant protocols are automatically suggested by the software menu.

Moreover, the parameters can also be adjusted by the operators, according to their specific needs and experience.

### Active acne

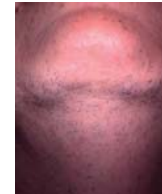


Before



After 4 treatments

### Hair removal



Before



After 3 treatments

### Spider nevus

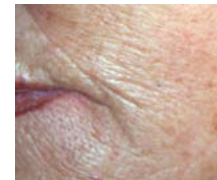


Before



After 1 treatment

### Skin rejuvenation



Before



After 3 treatments

